

# VISION RT Log 1:200

IDEAL Version: ID11\_0C\_01 <MD> Vertical Scale: 1:200

Graphics File Created: 07-Aug-2006 05:18

## PIP SUMMARY

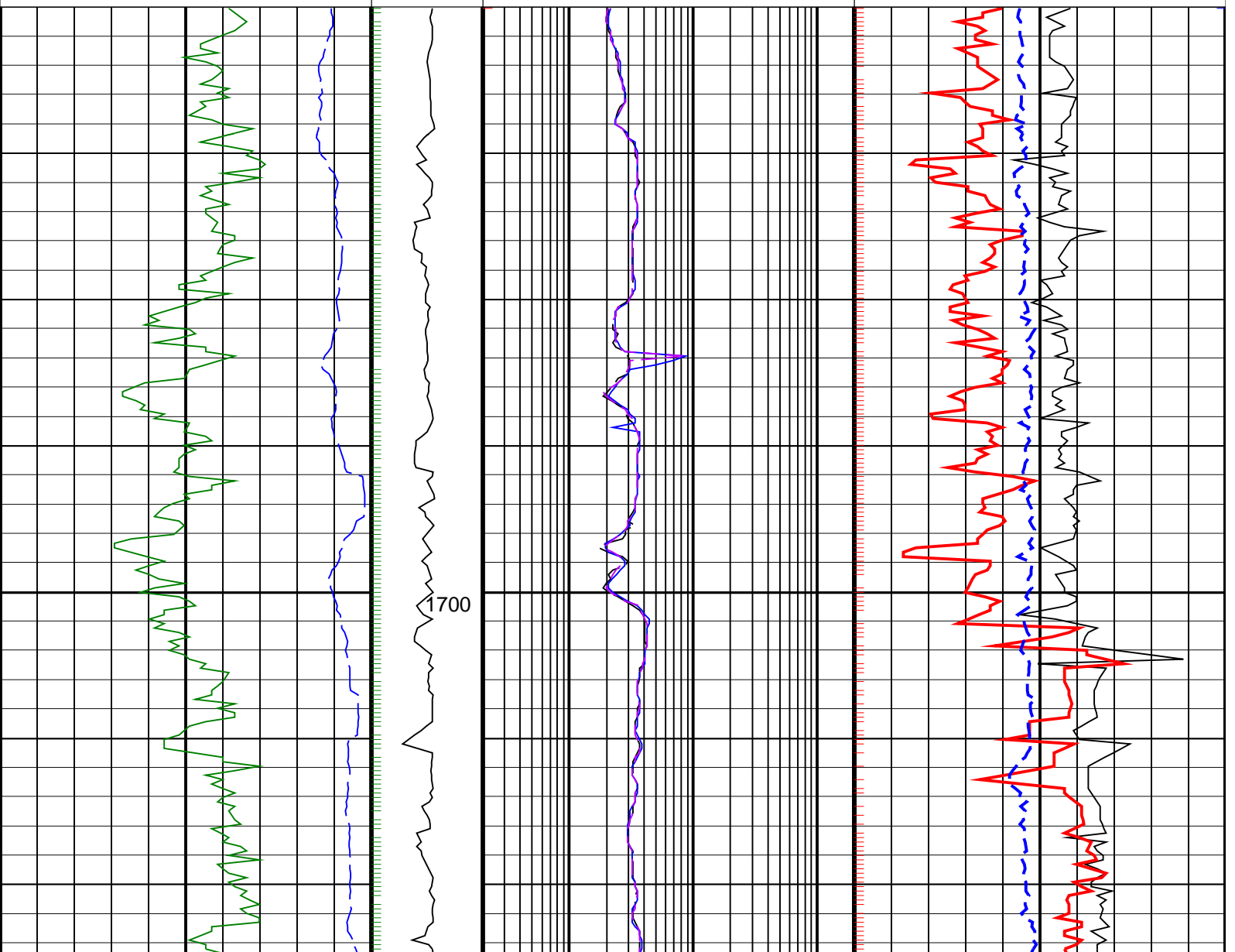
└ ARC Gamma Ray Samples

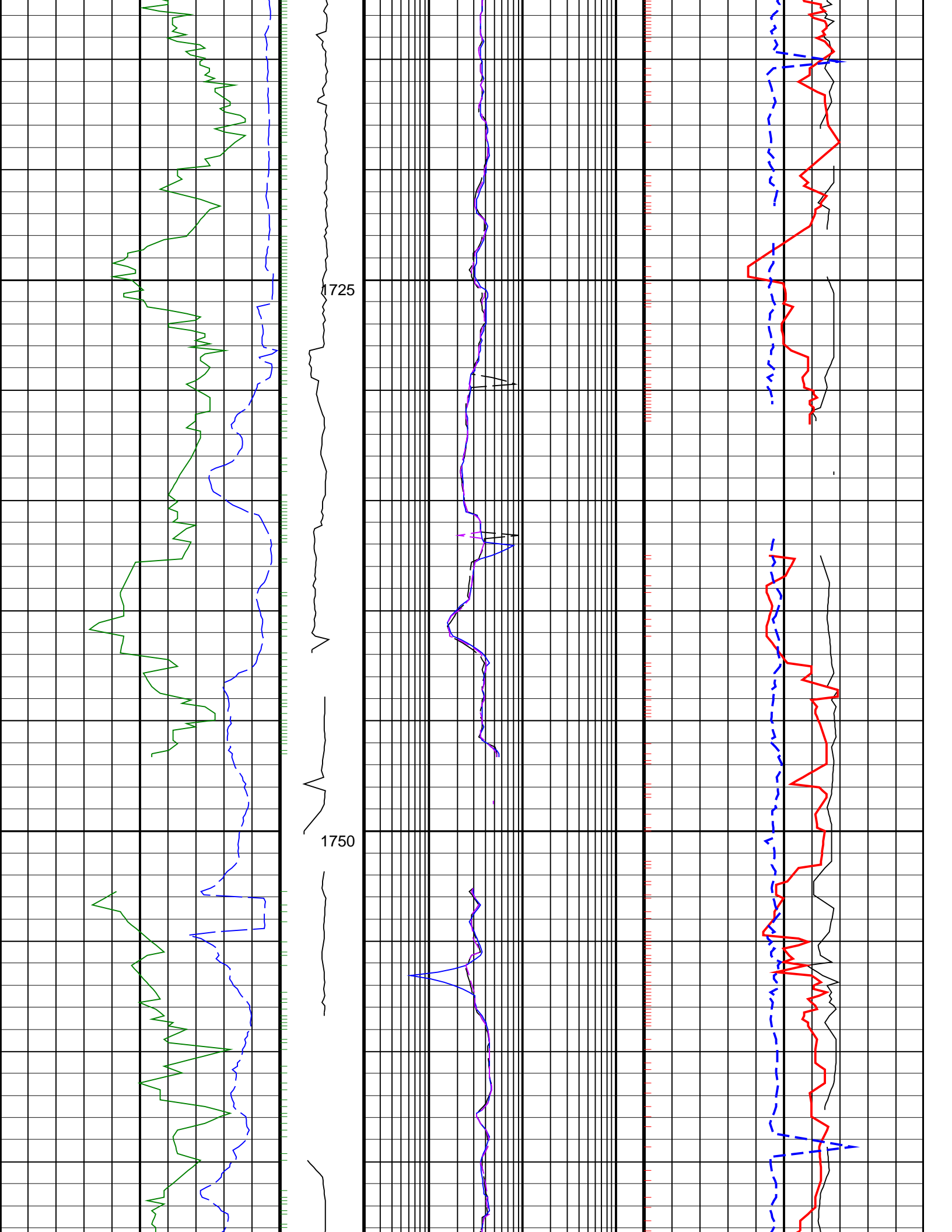
└ ARC Resistivity Samples

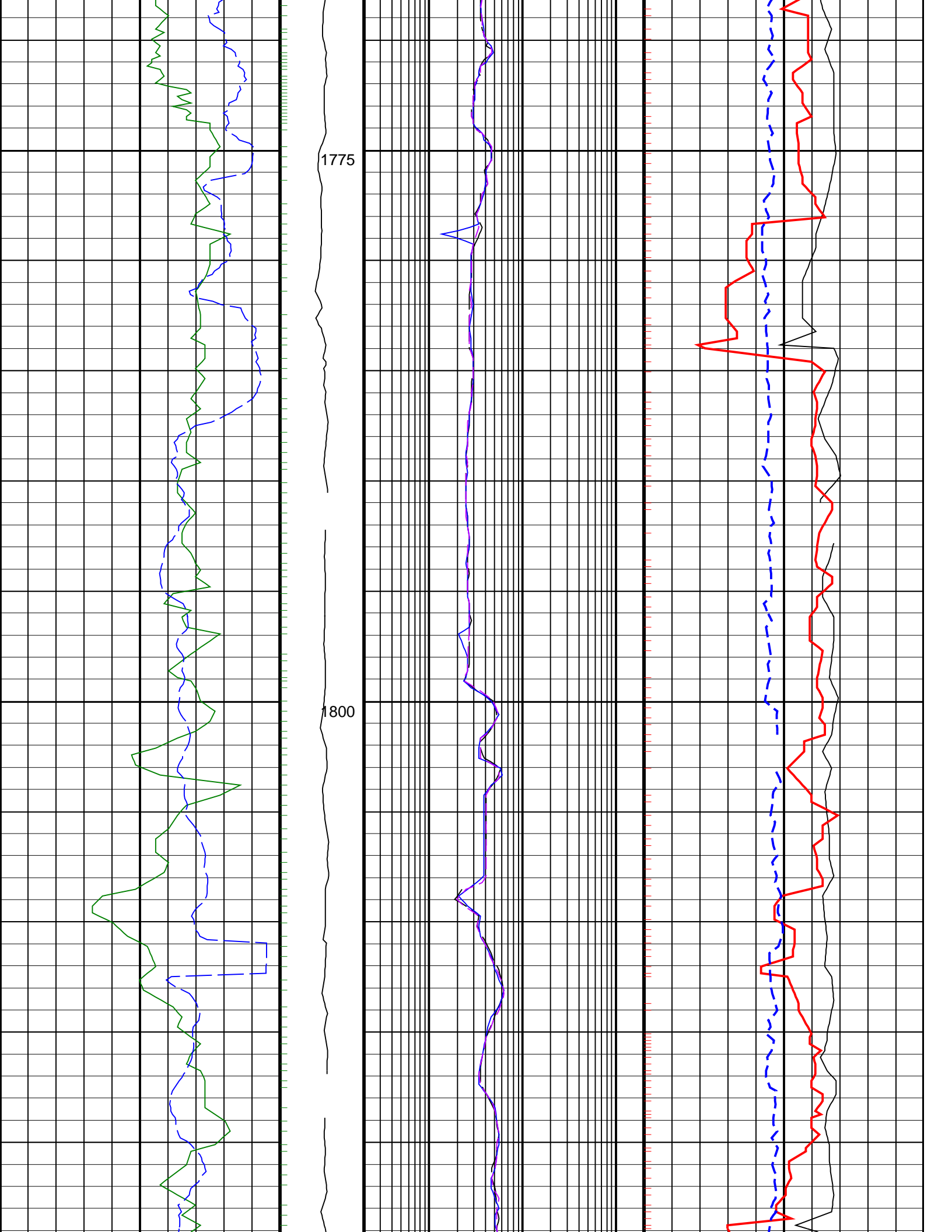
Density Ticks, 0.1 ft └

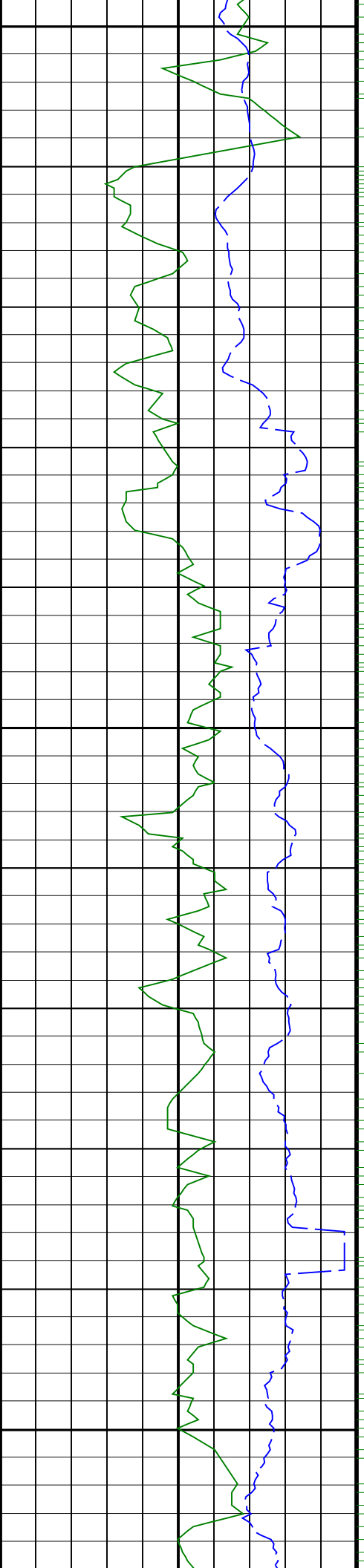
Neutron Ticks, 0.1 ft └

ARC Gamma Ray, Real-Time (ARC_GR_RT) (GAPI) 0 200		ARC BHCorr Phase-Shift Resistivity 28-in. at 2 MHz, Real-Time (P28H_RT) (OHMM) 0.2 200	Thermal Neutron Ratio, Bottom, Real-Time (TNRB_RT) (----) 45 -15
ROP*5 (ROP5) (M/HR) 200 0		ARC BHCorr Phase-Shift Resistivity 16-in. at 2 MHz, Real-Time (P16H_RT) (OHMM) 0.2 200	Bulk Density, Bottom, Real-Time Computed Downhole (ROBB_DH_RT) (G/C3) 1.85 2.85
MWD Collar RPM (CRPM_RT) (RPM) 0 400		ARC BHCorr Phase-Shift Resistivity 40-in. at 2 MHz, Real-Time (P40H_RT) (OHMM) 0.2 200	Bulk Density Correction, Bottom, Real-Time Computed Downhole (DRHB_DH_RT) (G/C3) -0.25 0.25





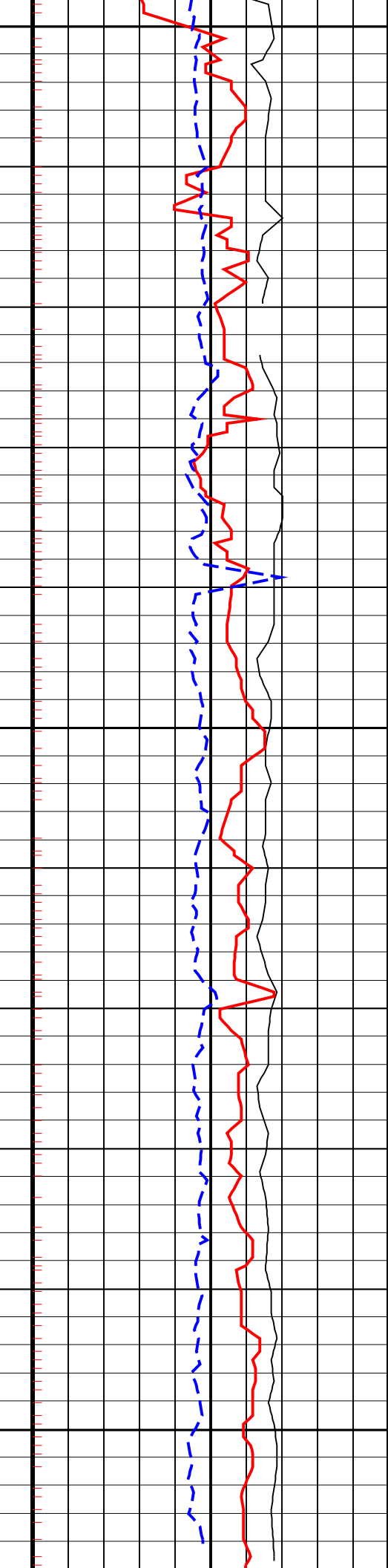
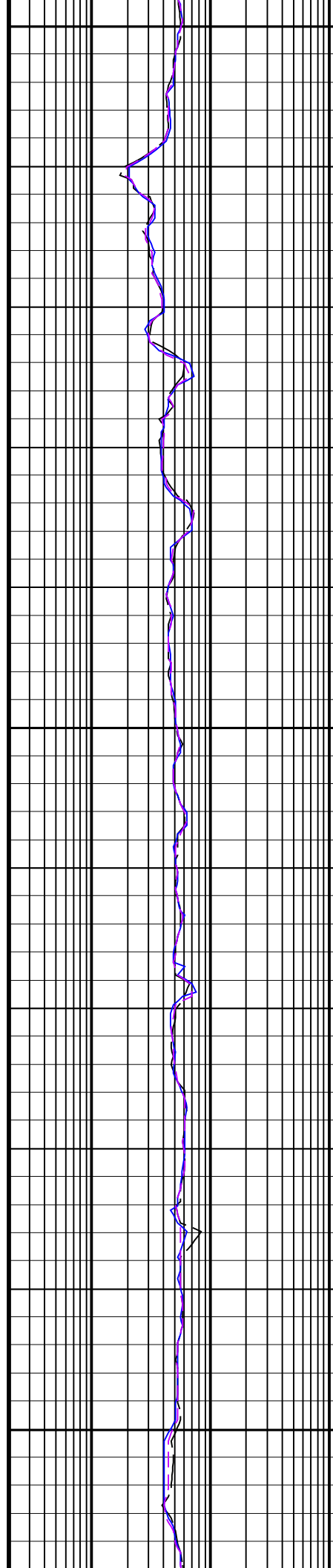


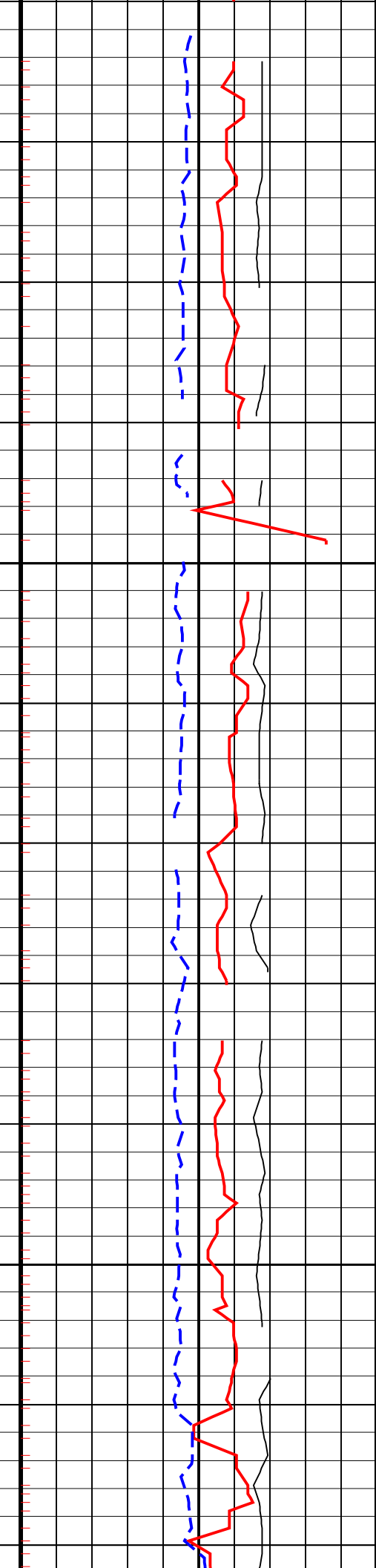
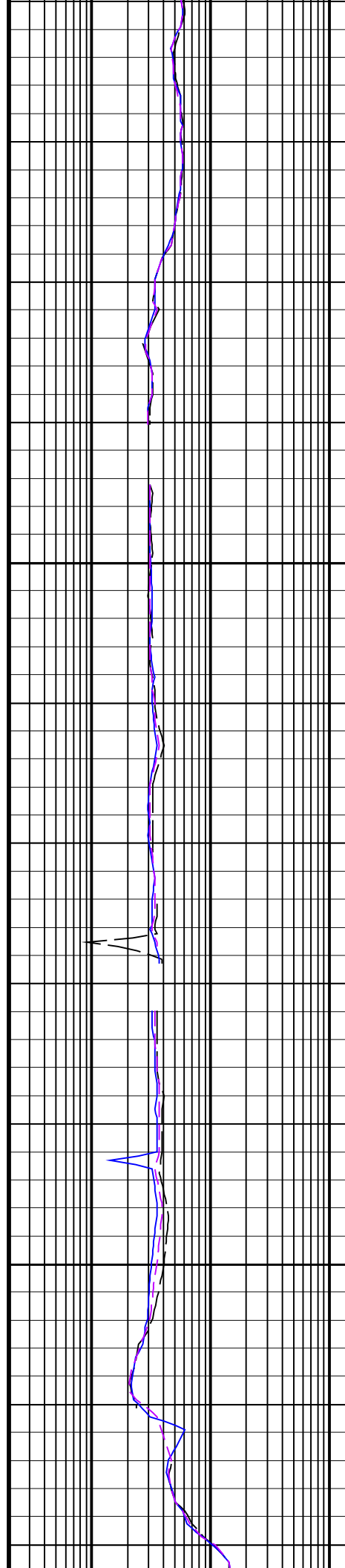
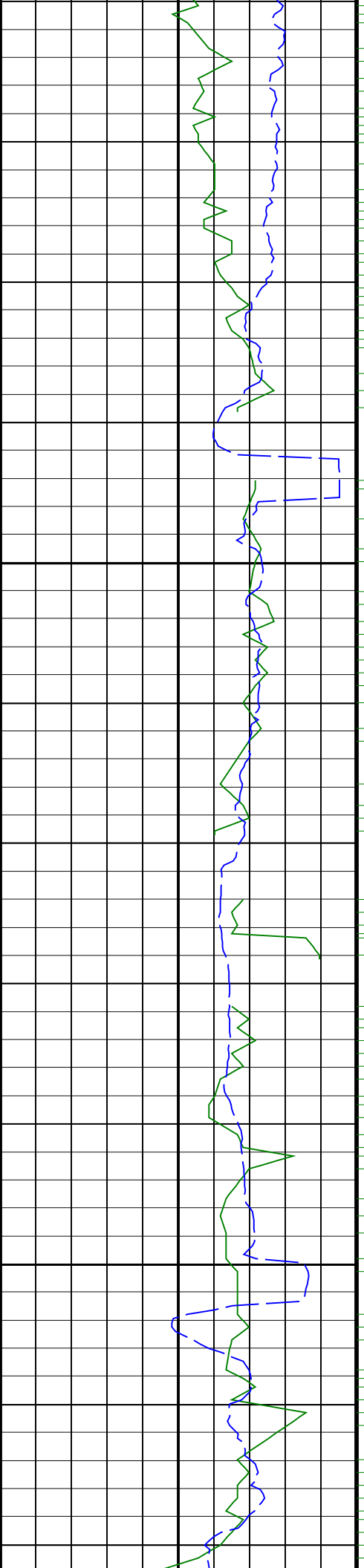


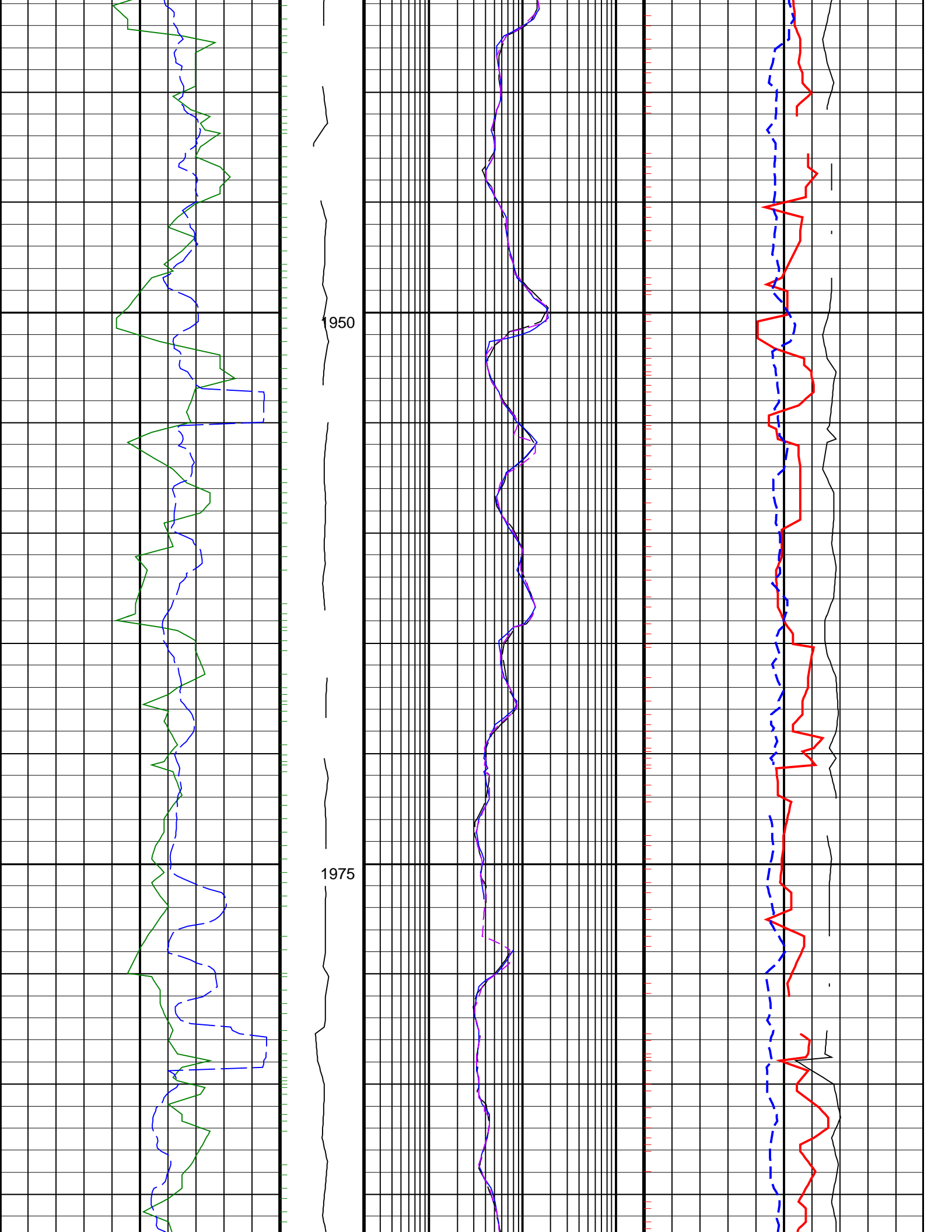
1825

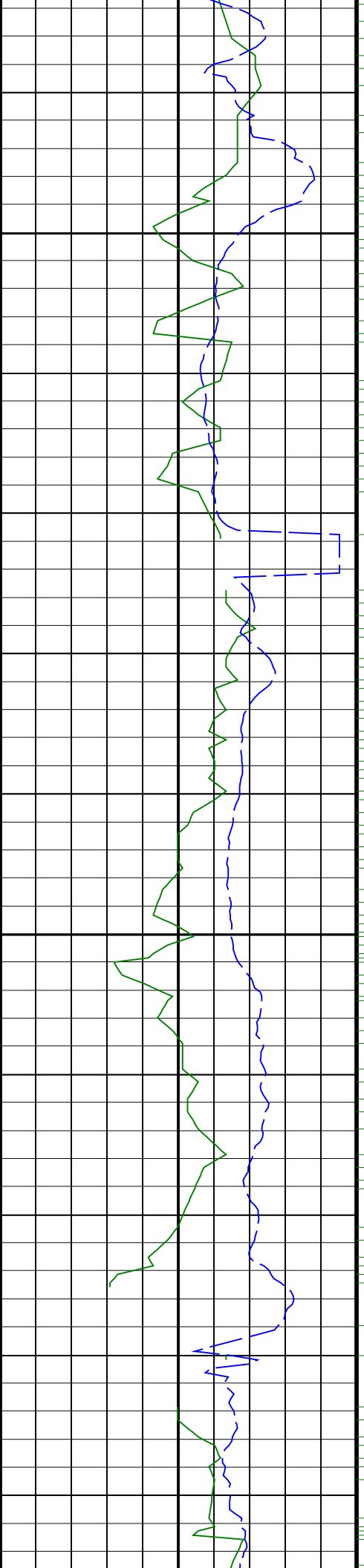
1850

1875



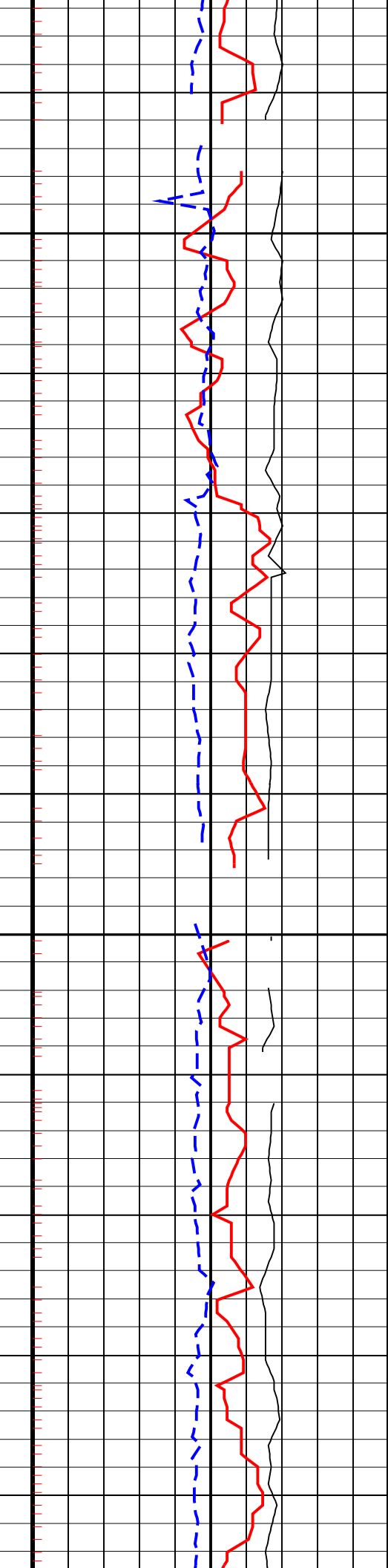
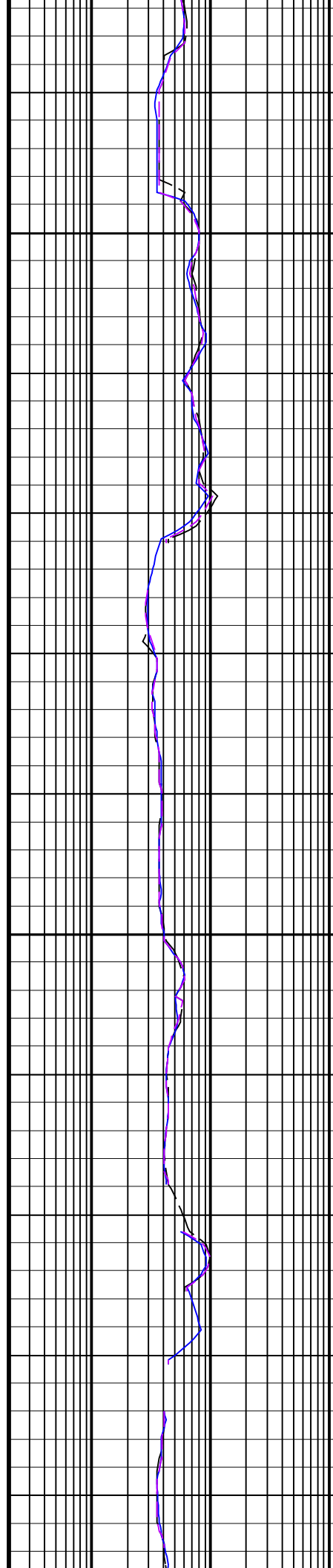


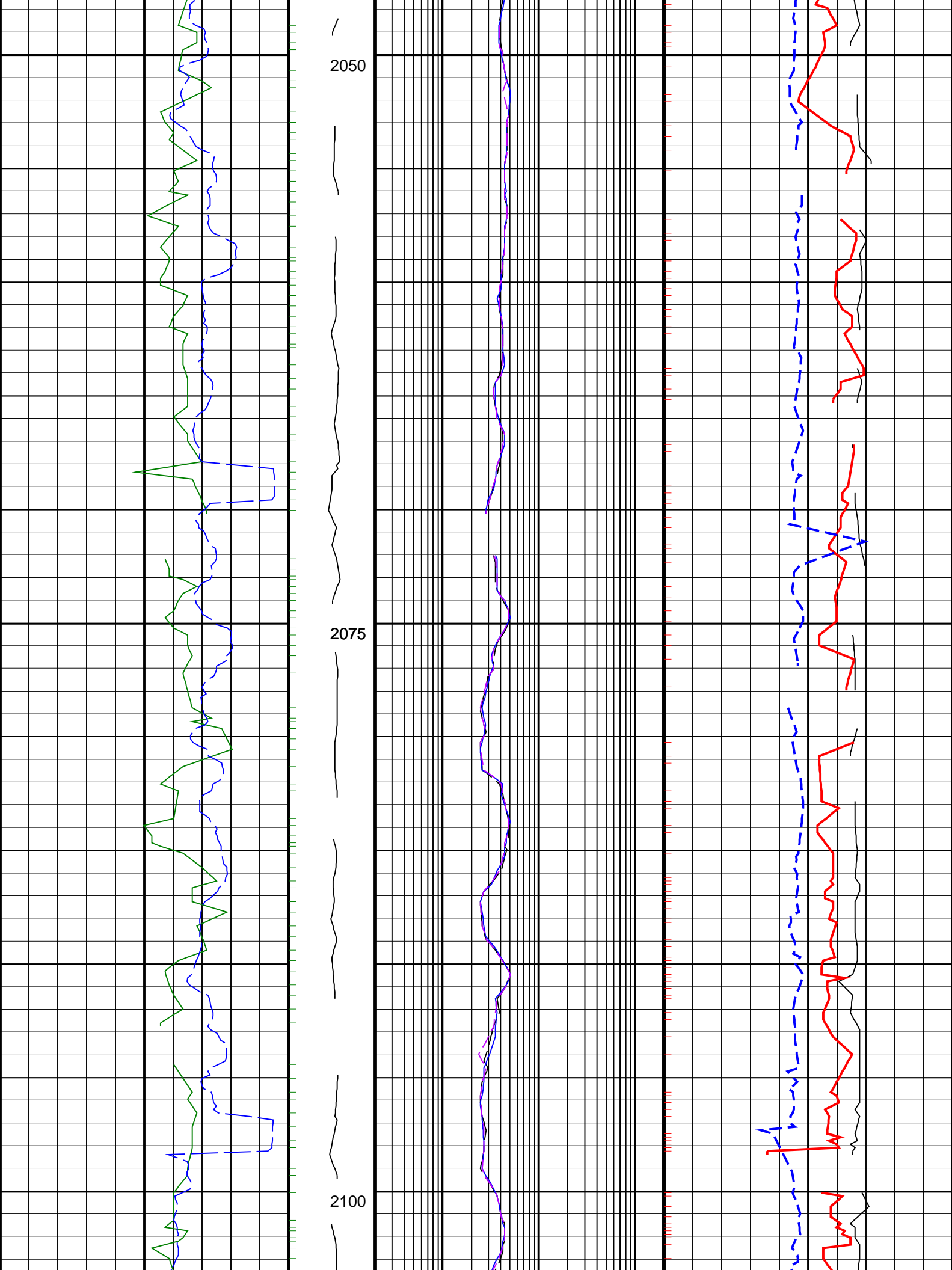




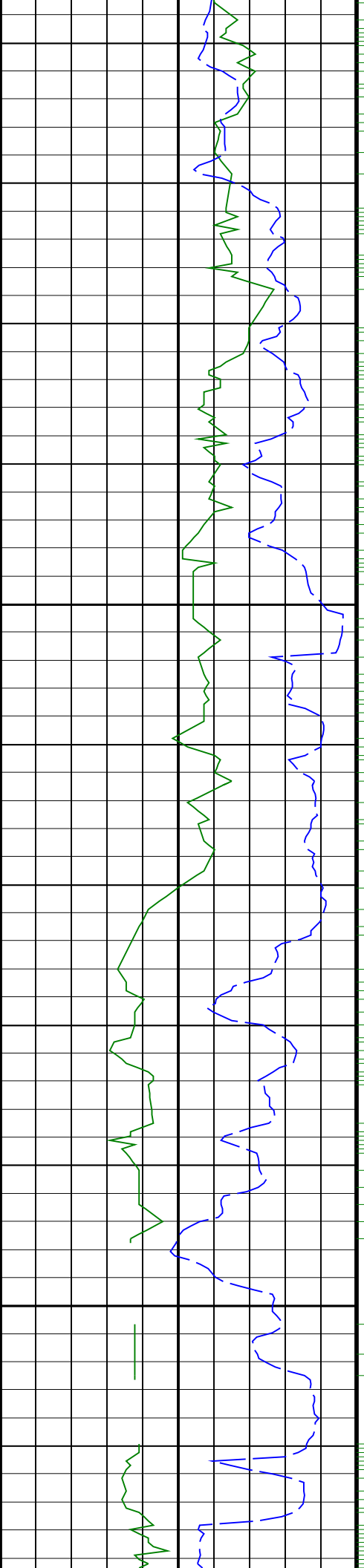
2000

2025

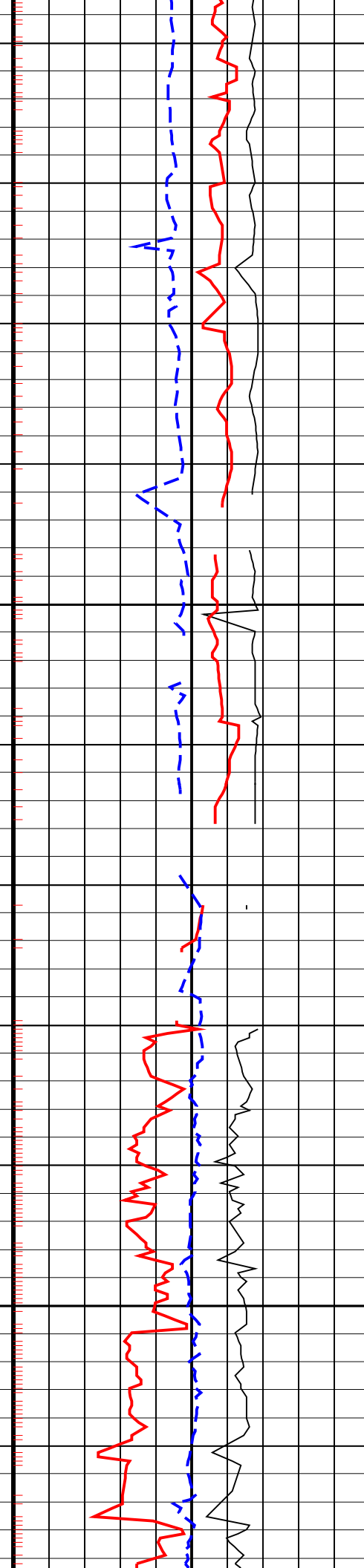
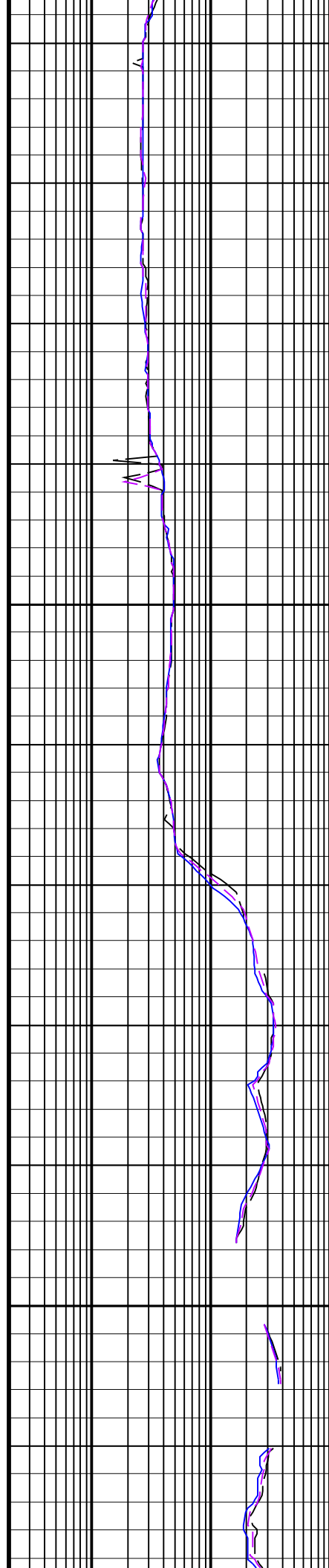




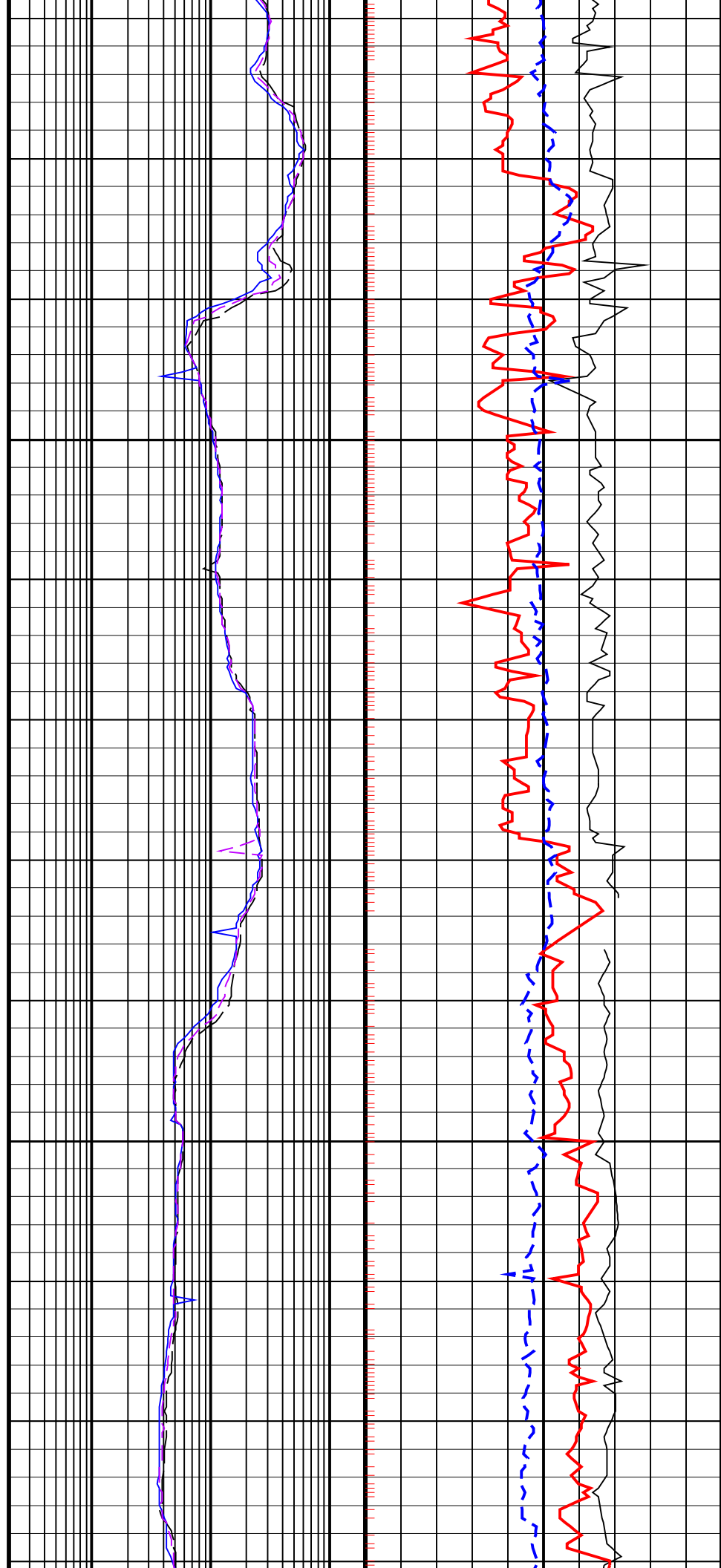
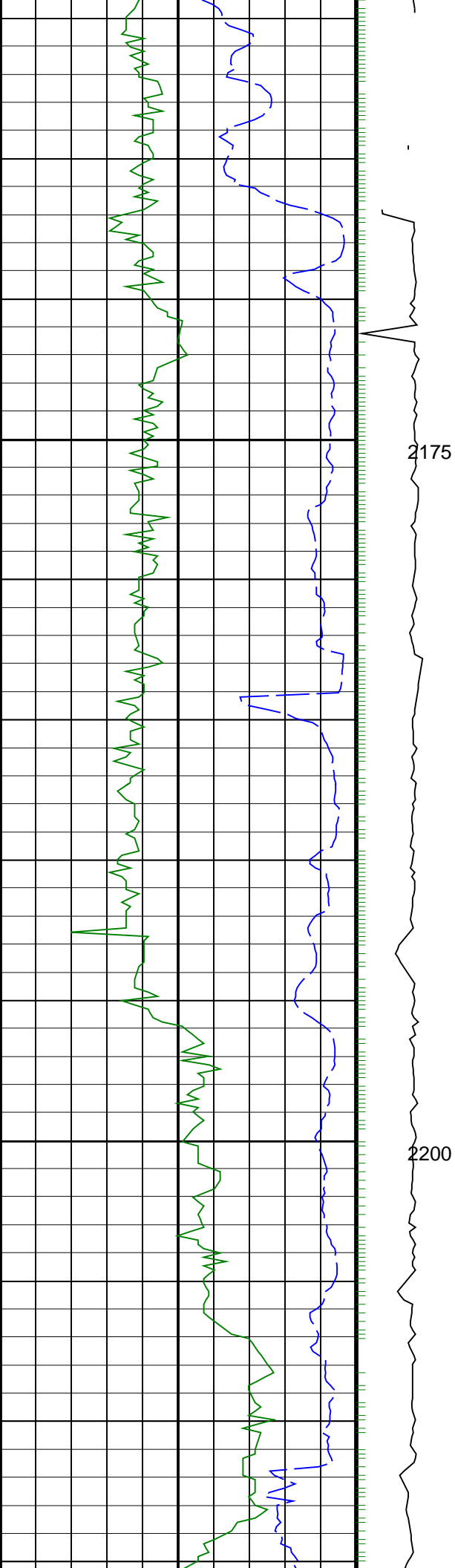


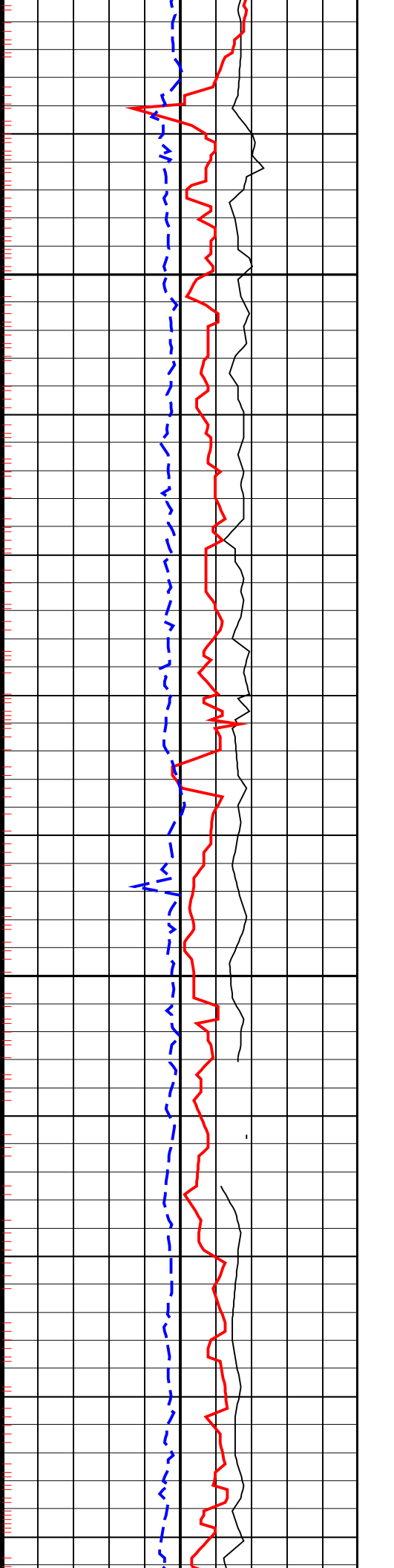
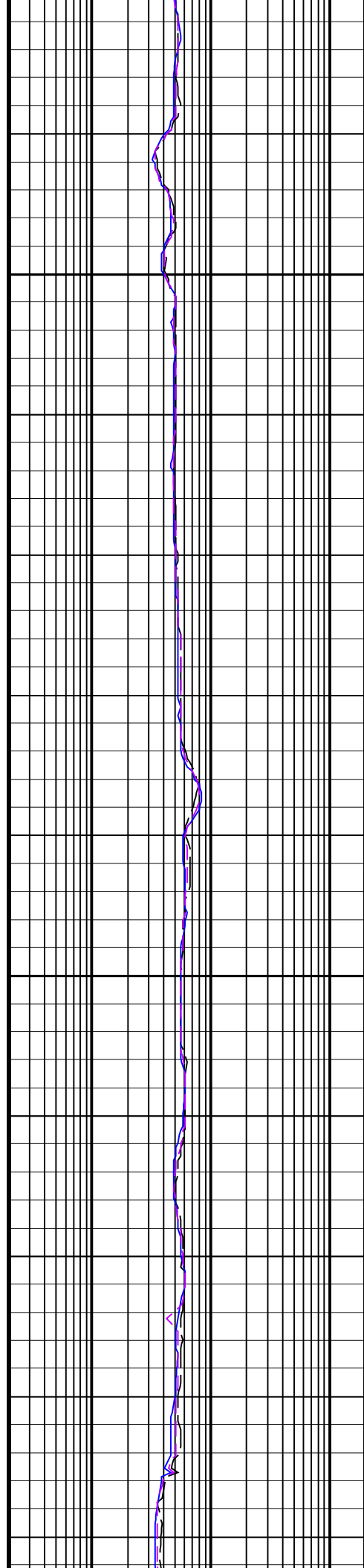
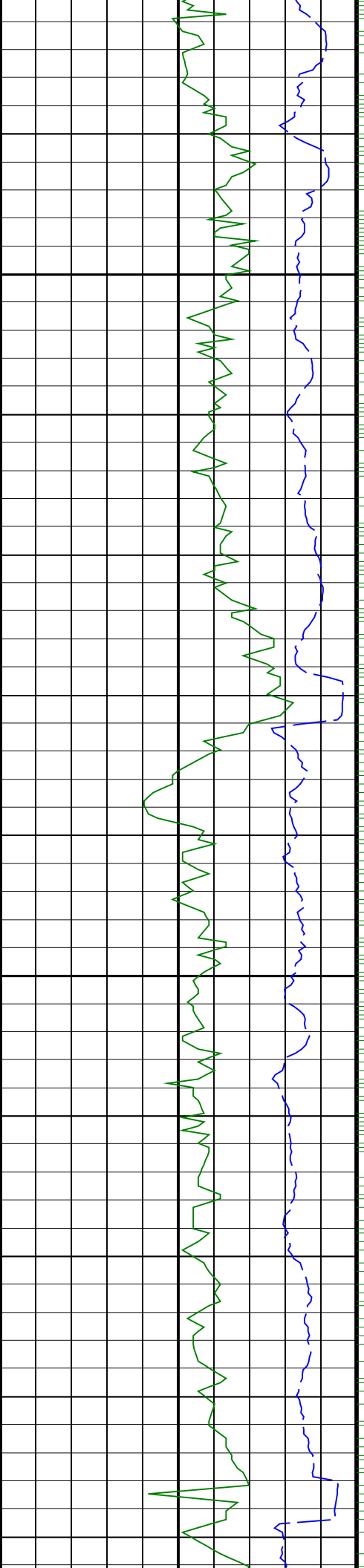


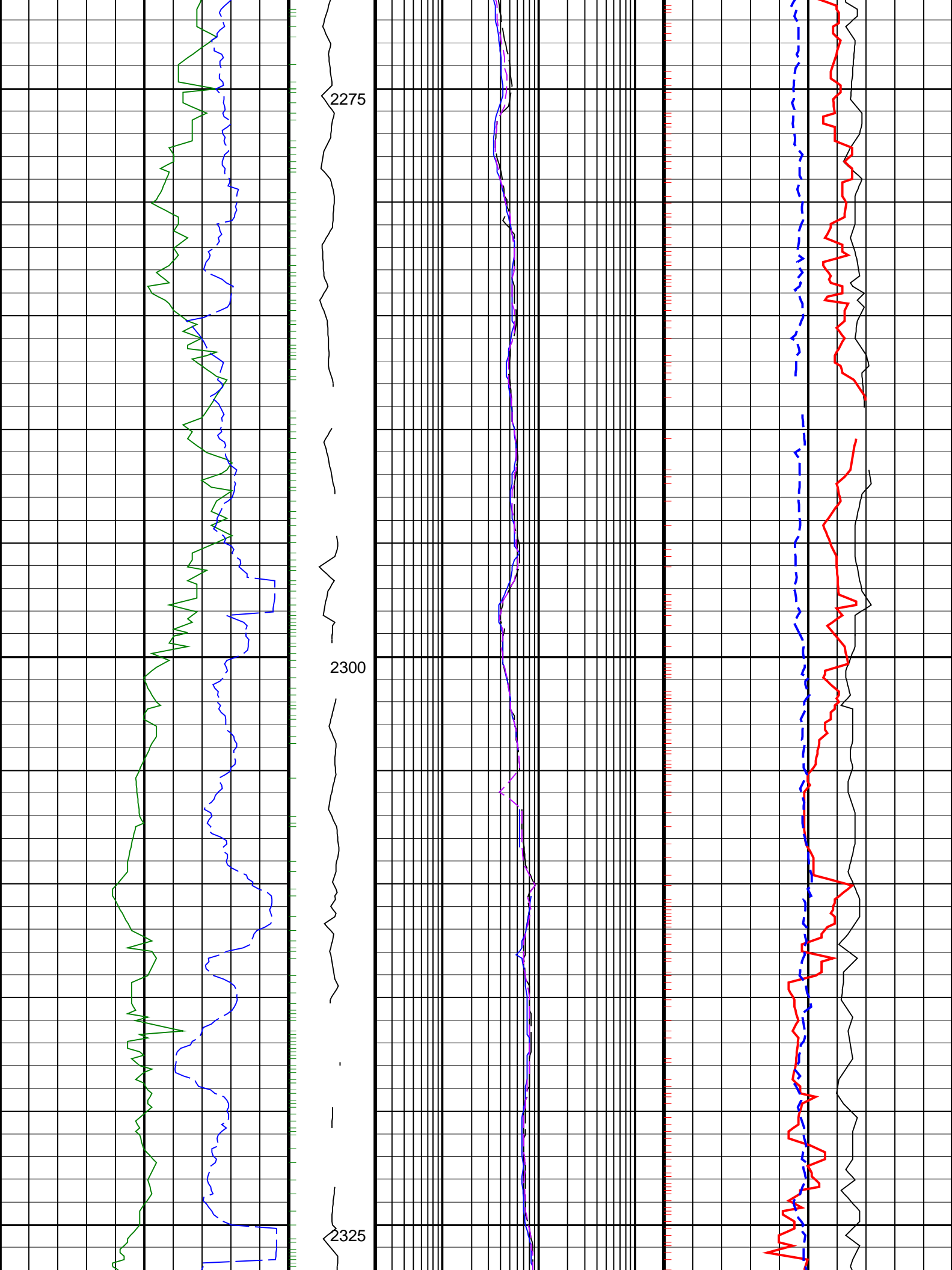
2125

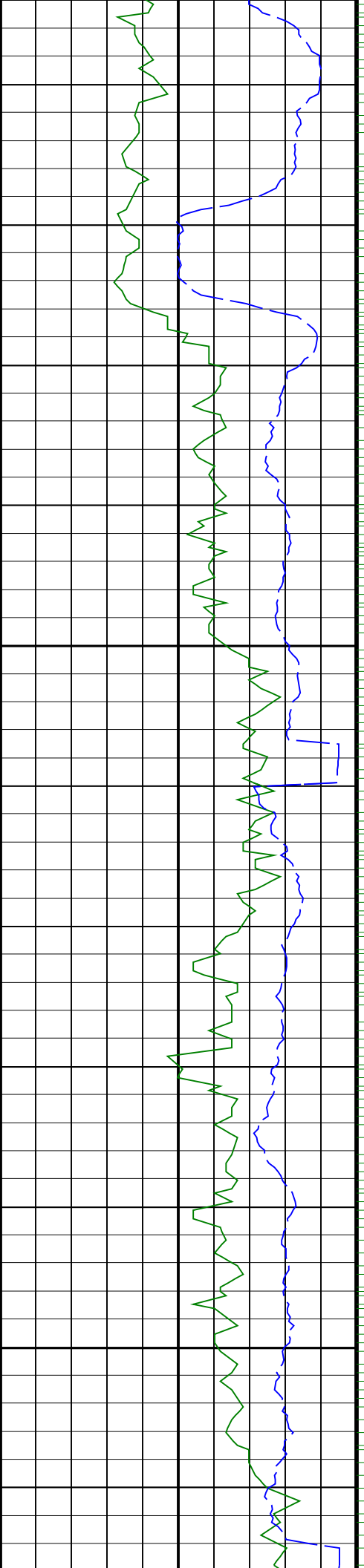


2150



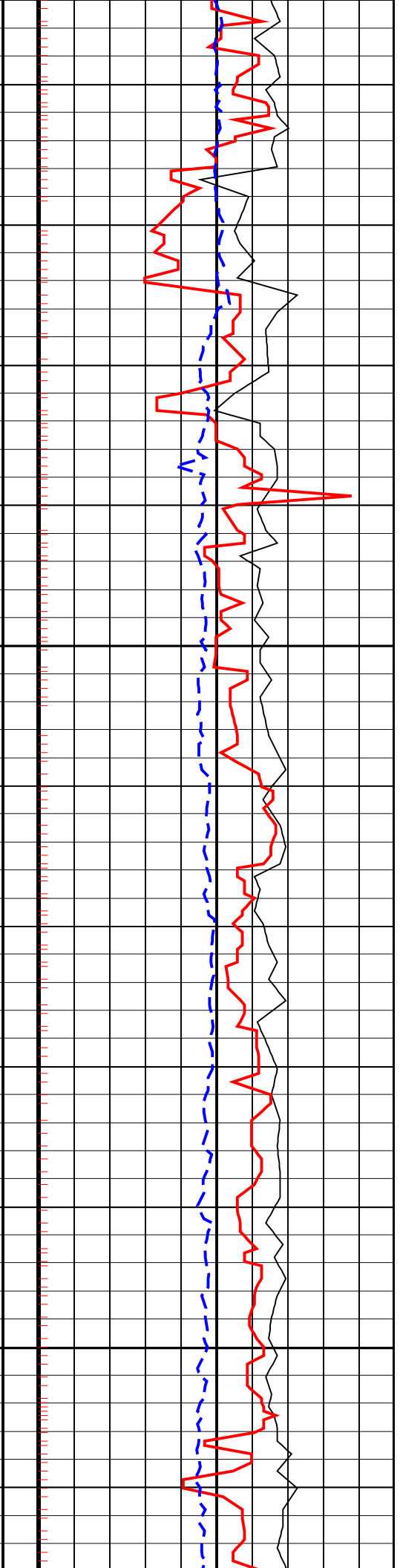
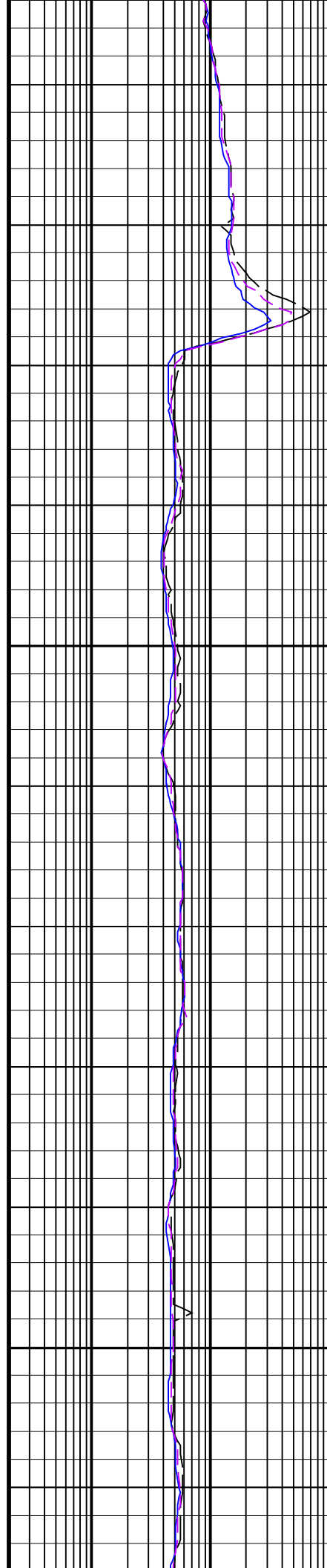


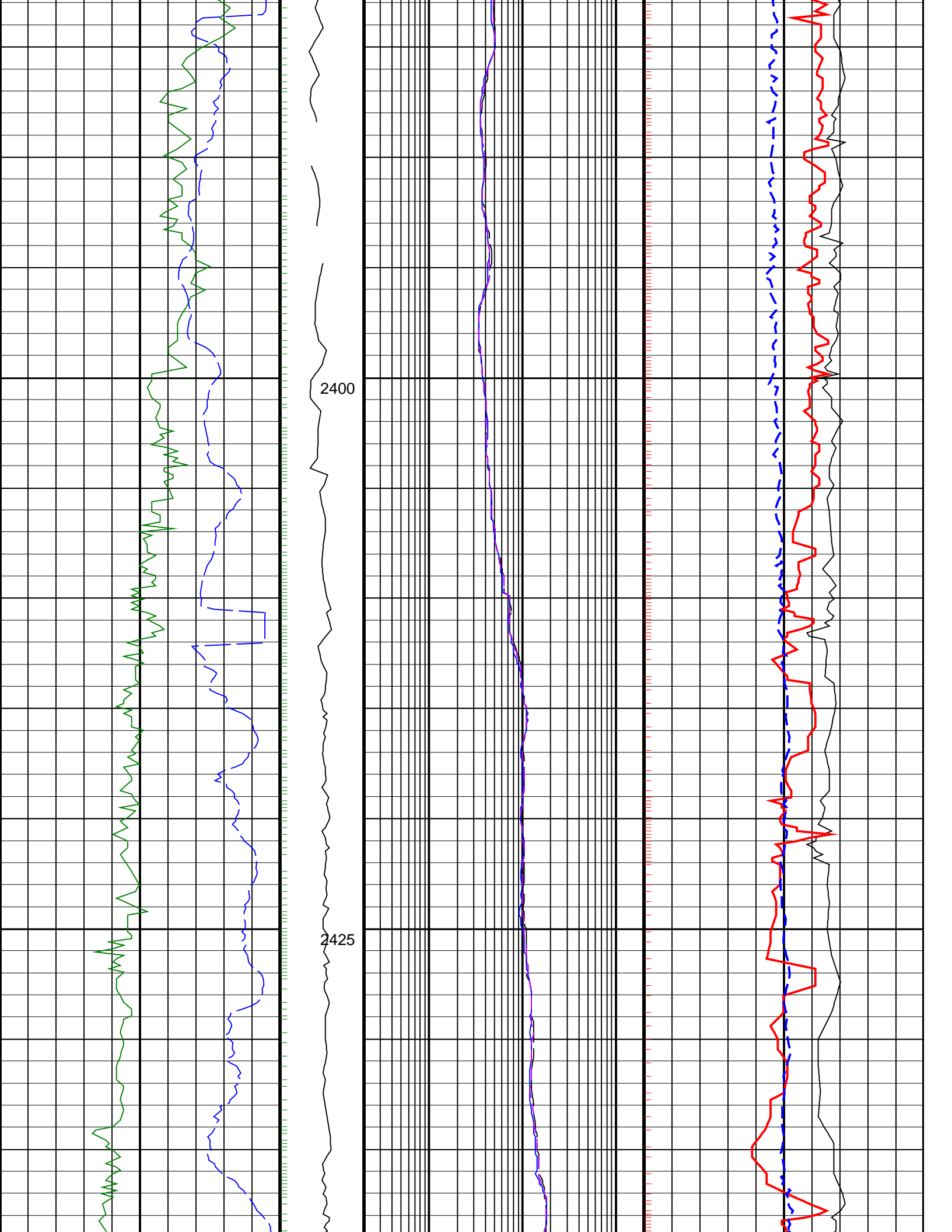


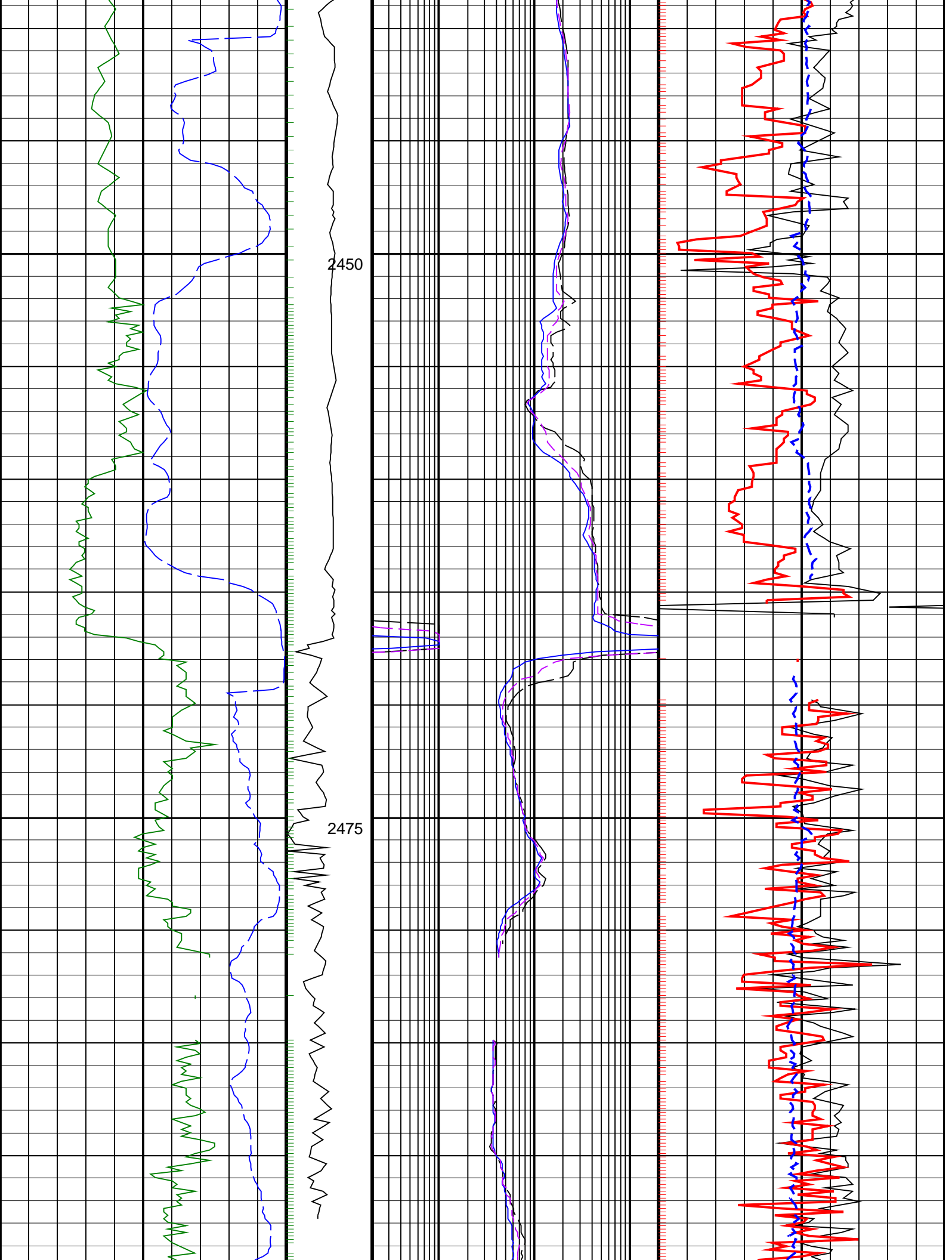


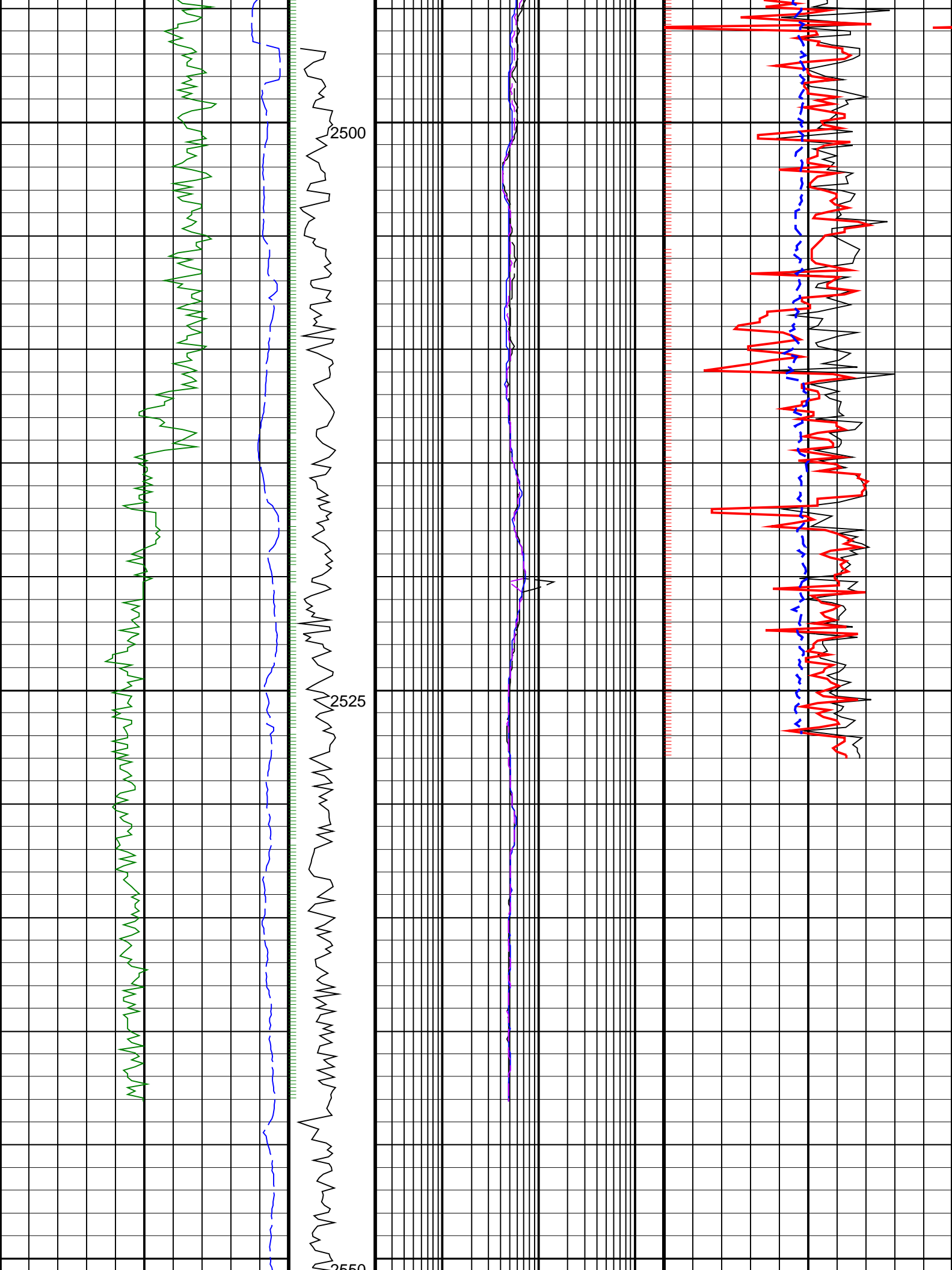
2350

2375











[illegible]